



In 2024, St. Coletta celebrated our 120th anniversary of dedicated service and ministry to individuals with developmental challenges. We continue to build on our legacy by planning for the next 120 years and beyond through our Endowment Campaign "Life Without Limits." In the first 6 months of the campaign, we secured \$1.88 million. We continue to work behind the scenes and are deeply grateful for your support. Thanks to your contributions, we can help hundreds of people live a full life with compassion, dignity, and respect. Thank you for your ongoing support of our mission.

You help us hire and retain the best quality support staff.

405 TOTAL STAFF  
253 are DSP's

JEFFERSON 233

GREATER MILWAUKEE 69

ILLINOIS 79

24 CLIENT EMPLOYEES

164 NEW HIRES

5.7 YEARS AVG. TENURE

# 987 SUPPORTERS STRONG

- 135 Parents or Guardians
- 81 Siblings
- 462 Friends
- 32 Past & Present Board Members (100% Board Giving)
- 160 Staff Members
- 52 Community Organizations/Foundations
- 65 Businesses

## MANY OF YOU GAVE MORE THAN ONCE!



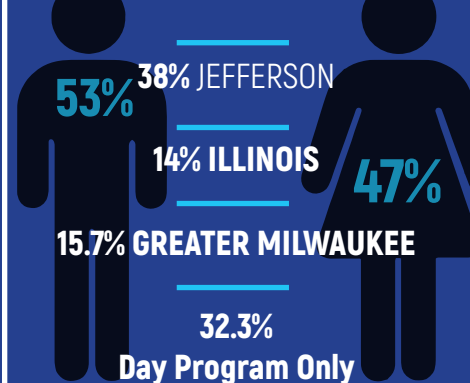
In 2024, the top three reasons that you and your fellow supporters made a gift were:

1. To honor your loved one.
2. In memory of loved ones; birthdays, anniversaries, or special occasion.
3. To respond to our needs via direct mail, email, event, or social media.

Day Programs Serve:

132 Residents  
111 Community Members

TOTAL INDIVIDUALS SERVED



Our individuals also live with a variety of developmental challenges, and many of them are coexisting.

Autism Spectrum

24%

Anxiety

39%

Dementia

6%

Down Syndrome

13%

Epilepsy or Seizures

30%

Cerebral Palsy

9%

Bipolar Disorder

12%

Depression

18%

Legal Blindness

5%



Recreation Services 53 Special Olympians and 18 Best Buddies. 68 individuals attended our dances.



Transportation Services  
91 total vehicles  
4 new vehicles  
28 wheelchair accessible  
21 buses  
24 minivans



Residential Services  
We Support 232 people in 40 St. Coletta operated residences.



Fanciscan Values & Mission Service  
We operate 3 Chapels and employ 3 Priests, 1 Director, and 1 Choir/Music Therapist, allowing everyone to attend chapel services.



77% Independent



12% Walker or Assistance



11% Wheelchair



75% Speaking



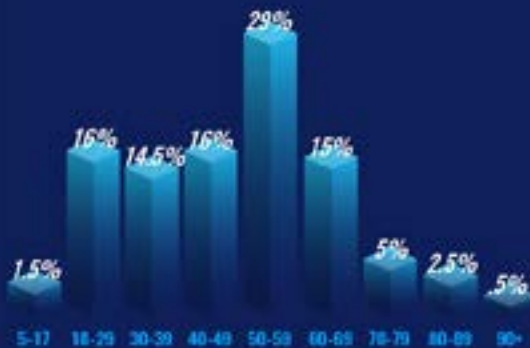
11% Partially Speaking



14% Non-Speaking

Since 1904, we have been dedicated to supporting individuals with developmental challenges. Our long-standing commitment means that we have had the privilege of serving many individuals throughout the majority of their lives. **343 TOTAL**

### Age of Individuals Served %



### Number of Years Served



Our homes are maintained and repaired for safety, comfort and longevity. Thanks to your generous gifts, we've been able to tackle numerous projects this year. Your support has enabled us to invest in:

33 Flooring Repairs      9 Concrete Projects

**\$111,800** + **\$98,600**

10 HVAC Units Installed

**\$86,156**

